

# Series 65,300 (1-065-3XX-05, -07 & -09)

[BACK TO TABLE OF CONTENTS](#)

## Division I Hazardous Location

### Mounting Face: NEMA 56C, 143TC and 145TC

### 4.5" AK, 5.88" AJ

Hazardous-location brakes are intended essentially for non-cyclic or holding purposes, but may be used for stopping light inertial loads.

**Static Torque:** 1.5 through 15 lb-ft

**Enclosure Material:** Cast Iron

**Release Type:** Knob, maintained with automatic reset

- Manual Wear Adjustment
- Epoxy Encapsulated Coil Construction, with Class H Insulation
- NO Interlock & NC Warning (Optional) Thermostats
- Spring-Set Electrically Released
- Lead Wire Length: 36 inches
- Maximum Speed: Horizontal 5000 rpm, Vertical 3600 rpm

**No modification required for vertical mounting**

### 1-065-3XX-05 Series Close Coupled Hazardous location NEMA 7, 9

Model Number	Nominal Static Torque (lb-ft) (Nm)	Dimensions in Inches (mm)		Weight lbs (kg)
		SL Max.	SL Min.	
1-065-311-05-XXX	1.5 (2)	2.95 (74.93)	2.25 (57.15)	38 (17.2)
1-065-321-05-XXX	3 (4)	2.95 (74.93)	2.25 (57.15)	38 (17.2)
1-065-331-05-XXX	6 (8)	2.95 (74.93)	2.25 (57.15)	40 (18.1)
1-065-351-05-XXX	10 (14)	2.95 (74.93)	2.31 (58.67)	45 (20.4)
1-065-361-05-XXX	15 (20)	2.95 (74.93)	2.31 (58.67)	45 (20.4)

### 1-065-3XX-07 Close Coupled Hazardous location NEMA 7, 9

Model Number	Enclosure	Static Torque (lb-ft)	Weight lbs (kg)
1-065-312-07-XXX	IP 56	1.5	52 (23.6)
1-065-322-07-XXX	IP 56	3	52 (23.6)
1-065-332-07-XXX	IP 56	6	57 (25.8)
1-065-352-07-XXX	IP 56	10	57 (25.8)
1-065-362-07-XXX	IP 56	15	57 (25.8)

## Engineering Specifications

Nominal Static Torque (lb-ft) (Nm)	No. of Friction Discs	Coil Size	Maximum Solenoid Cycle Rate <sup>①</sup>	Thermal Capacity <sup>②</sup>	Inertia (Wk <sup>2</sup> )
			cycles/min	hp-sec/min (watts)	
1.5 (2)	1	4	40	2 (25)	.008 (3.36)
3 (4)	1	4	40	2 (25)	.008 (3.36)
6 (8)	1	K4	40	2 (25)	.008 (3.36)
10 (14)	2	K4	40	2 (25)	.014 (5.58)
15 (20)	2	K4+	40	2 (25)	.014 (5.58)

① Maximum solenoid cycle rate is 40 cycles/min., based on ambient temperature of 72°F (22°C) with 50% duty cycle. Does not relate to brake cycle rate (see Thermal Capacity).

② Thermal capacity rating is 2 hp-sec/min. (25 watts) based on ambient temperature of 72°F (22°C), stop time of one second or less, with no heat absorbed from motor. Derate thermal capacity by 25% for vertical mounting. Refer to "Selection Procedure" Section.

## Ordering and Identification Information

Example of a complete part number:

1-065-351-05-BFB ——— Lead wire position (external left)  
 ——— 230 Vac  
 ——— 5/8 bore and 3/16 x 3/32 keyway  
 ——— Series : (Current Design = 05)  
 (New Fan Guard  
 Mount = 09)

### Standard AC Voltage Ratings

Character	Voltage	Hz
B	115	60
D	110	50
E	200	60
F	230 190	60 50
H	220	50
L	460 380	60 50
M	415	50
N	575	60
O	110/220	50
P	115/208-230	60
Q	208-230/460 190/380	60 50
R	200/400	60

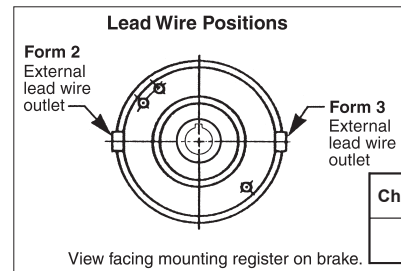
### Hub Selection

Character	Bore (in.)	Keyway** (in. x in.)
A*	5/8	1/8 x 1/16
B	5/8	3/16 x 3/32
C	3/4	3/16 x 3/32
D	7/8	3/16 x 3/32
K	1/2	1/8 x 1/16
maximum allowable bore	1.0 in. (22.40 mm)	

\* These bores are non-standard.

\*\* Keyseats made to ANSI B17.1 standard

**Modifications are available—see SAB Modification Section**



## Current Ratings (amperes)

Solenoid Coil Size	AC Current	Voltage: 60 Hz					Voltage: 50 Hz			
		115	200	230	400	460	575	110	220	380
4	Inrush	3.6	2.1	1.8	1.1	.9	.7	4.1	2.1	.9
	Holding	.3	.2	.2	.08	.08	.06	.3	.2	.08
K4	Inrush	4.3	2.5	2.2	1.3	1.1	.9	3.8	1.9	1.1
	Holding	.3	.2	.2	.1	.08	.07	.4	.2	.08
K4+	Inrush	4.6	2.5	2.3	1.2	1.0	.9	4.9	2.0	1.0
	Holding	.4	.2	.2	.1	.1	.08	.4	.2	.1

**1-065-3XX-05 Series**

**Mounting Requirements:** 1-065-3XX-05 Series Hazardous Location Motor Mounted Brake is used for mounting close coupled (directly) to the motor end bell. If the brake is to be mounted to a motor fan guard, or if a motor frame adapter is incorporated, it is recommended that Series 1-065-3XX-09 be used, as it provides additional bearing support for the longer shaft that is required. The acceptability of the brake and motor combination must be determined by Underwriters Laboratories Inc.

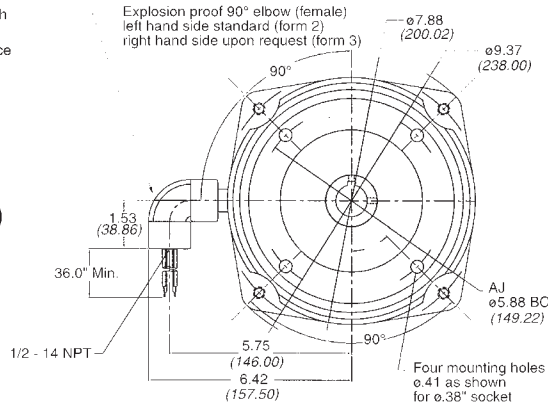
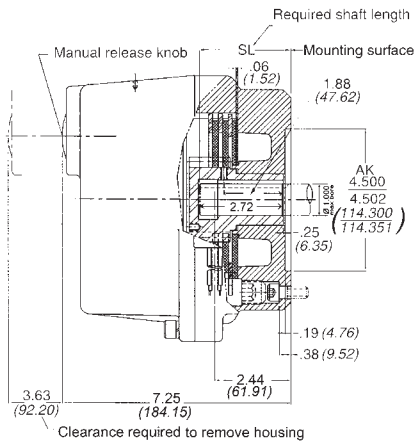
**Certified:** Series 65,300-05 (1-065-3XX-05) USL/CNL, File E-14893, for Class I, Group C and D and Class II, Group E, F and G  
Class I, Zone 1, Group IIA and IIB

**Enclosure Protection:** Type 1/IP 40 and Hazardous Location NEMA 7, 9

**Installation and Service Instructions:** P/N 8-078-925-13 Rev. C & D brakes

**Parts List:** P/N 8-078-913-13 Rev. C & D brakes

Dimensions for estimating only.  
For installation purposes request certified prints.



**1-065-3XX-07 Series**

**Mounting Requirements:** 1-065-3XX-07 Series Hazardous Location Motor Mounted Brake is used for mounting close coupled (directly) to the motor end bell. If the brake is to be mounted to a motor fan guard, or if a motor frame adapter is incorporated, it is recommended that Series 1-065-3XX-09 be used, as it provides additional bearing support for the longer shaft that is required. The acceptability of the brake and motor combination must be determined by Underwriters Laboratories Inc.

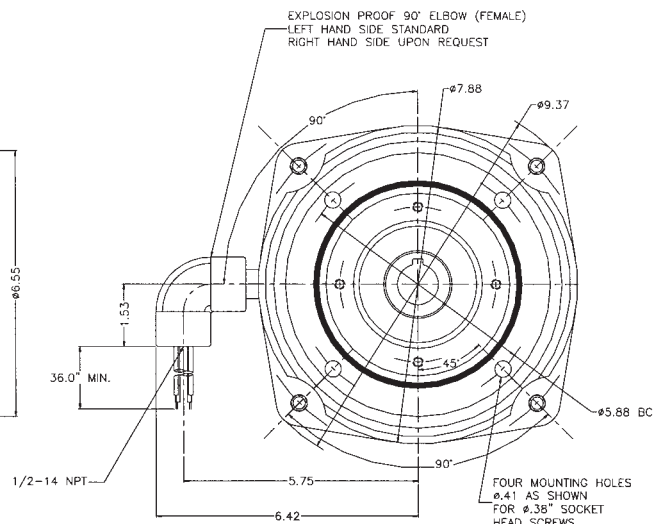
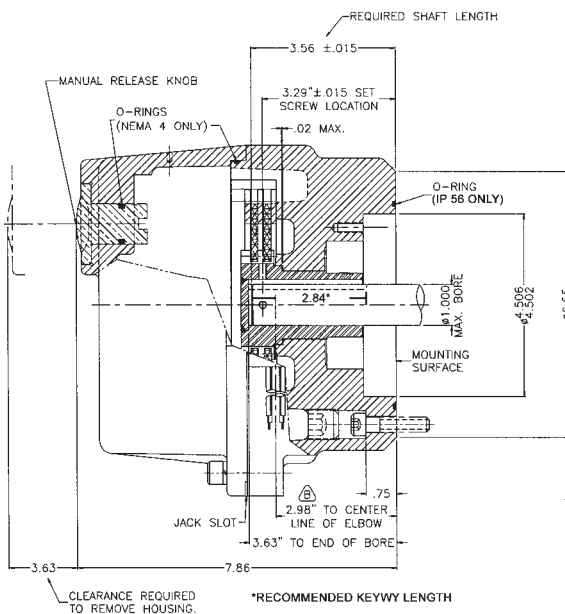
**Certified:** Series 65,300-07 (1-065-3XX-07) USL/CNL Listed, File E-14893, for Class I, Group C and D and Class II, Group F and G  
Class I, Zone 1, Group IIA and IIB

**Enclosure Protection:** Type 4/IP 56, and Hazardous Location NEMA 7, 9, UL Type 4

**Installation and Service Instructions:** P/N 8-078-925-09

**Parts List:** P/N 8-078-913-09

Note: 65,300 Series Close-Coupled Brakes (-07) must be mounted directly to motor endbell.



**1-065-3XX-09 Fan-Guard Mount IP 23  
Hazardous location NEMA 7, 9**

Model Number	Static Torque lb-ft (Nm)	Weight lbs (kg)
1-065-311-09-XXX	1.5 (2)	52 (23.6)
1-065-321-09-XXX	3 (4)	52 (23.6)
1-065-331-09-XXX	6 (8)	57 (25.8)
1-065-351-09-XXX	10 (14)	57 (25.8)
1-065-361-09-XXX	15 (20)	57 (25.8)

**1-065-3XX-09 Series**

**Mounting Requirements:** 1-065-3X1-09 Series Hazardous Location Motor Mounted Brake is recommended for mounting to a motor fan guard or for use with a motor frame adapter. The acceptability of the brake and motor combination must be determined by Underwriters Laboratories Inc.

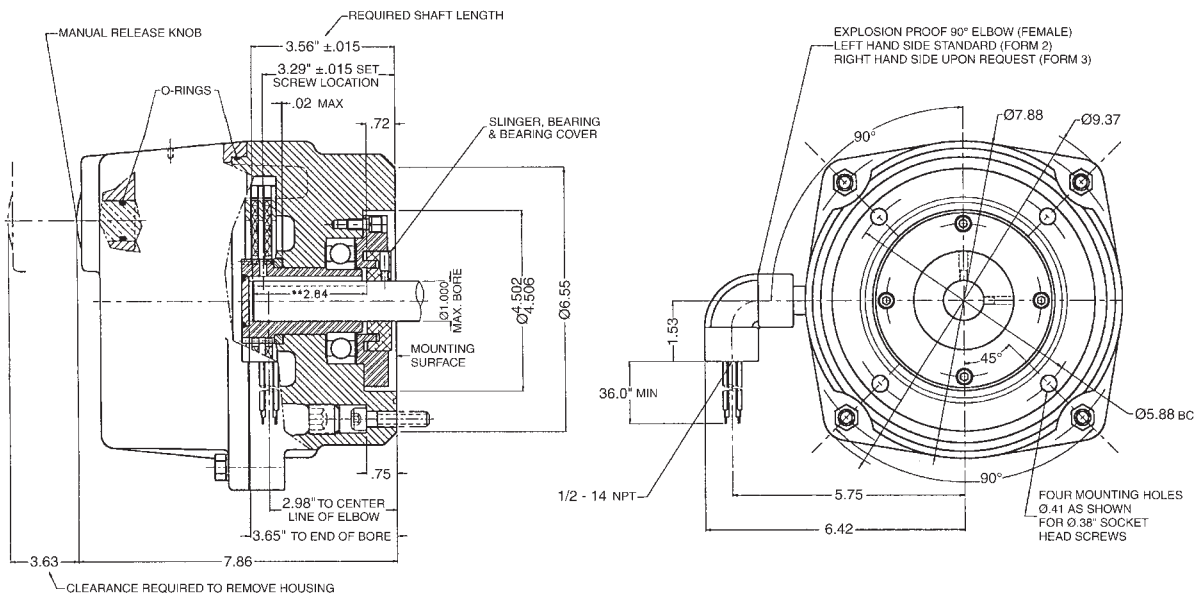
**Enclosure Protection:** Type 1/IP 40 and Hazardous Location NEMA 7, 9

**Certified:** 65,300-09 (1-065-3XX-09)  
USL/CNL File E-14893, for Class I, Group C and D and Class II, Group F and G  
Class I, Zone 1, Group IIA and IIB

**Installation and Service Instructions:** P/N 8-078-925-09

**Parts List:** P/N 8-078-913-09

*Dimensions for estimating only.  
For installation purposes request certified prints.*



\*\*Maximum keyway length for Fan Guard Mount (1-065-3XX-09)